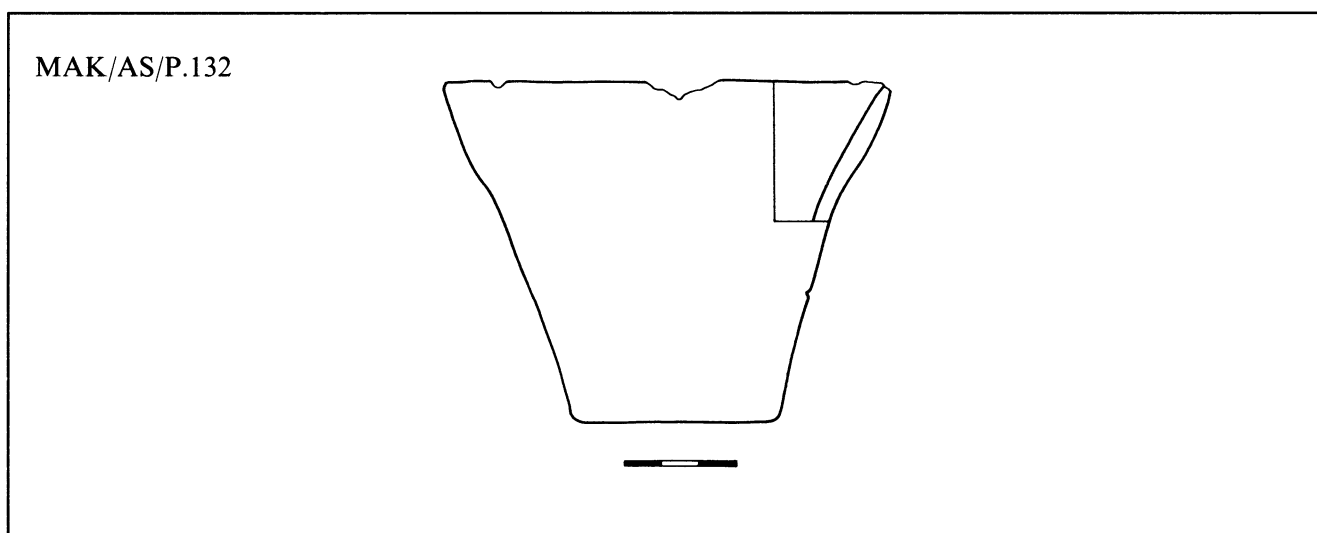


OTHER CULTURES
(doubtful pieces)

Pl. no. 63

Mus. no.: MAK/AS/P.132
Culture: Middle Horizon 2 (Huari influenced culture of the Central Coast? Maybe Huaura).
Style: ?
Type of vessel: Jar.
Provenience: Probably Ancón (original 19th century label).

Dimensions	Height	Max. diam.	Min. diam.	Length	Width	Weight
Total	91	119	115			"252"
Mouth						
Neck						
Spout						
Arc						
Bridge						
Handle						
Body						
Base		55	55			



Type of ware: Blackware — very irregular.

Surface finish: Traces of smoothing — vertical rubbing in the lower outside part of the vessel walls, horizontal — inside.

Surface appearance: Matte or slightly glossy, smooth.

Surface color: 5 YR 4.5/3 brown red, 2.5 Y 3/0 dark gray.

Technique: Hand modeled.

Description: Jar. Loving cup with walls flaring in funnel shape upwards (straight in the lower part, slightly bulging outwards in the upper part, which further increases the angle of the flaring of the walls). Rounded lip of the rim. Flat bottom. Not decorated.

Average workmanship.

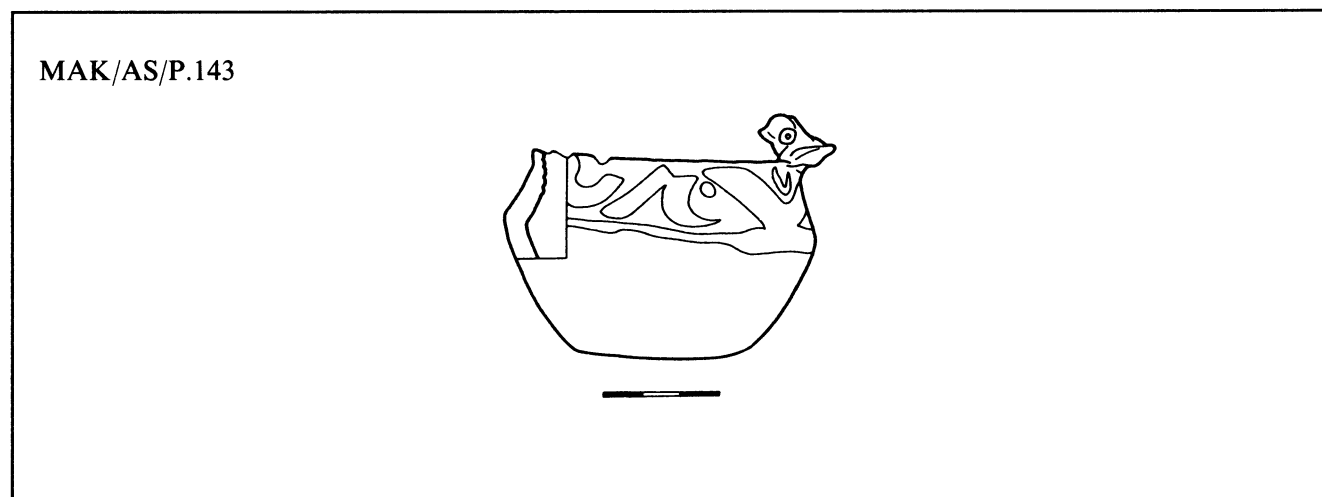
Condition: Good. Vessel cracked, glued, plastered. Lip of the rim chipped.

Acquired by: Kluger Collection.

Pl. no. 64

Mus. no.: MAK/AS/P.143
 Culture: Ichma (?).
 Style: Middle Ichma (?)
 Type of vessel: Jar.
 Provenience: Unknown. Ancón (doubtful provenience).

Dimensions	Height	Max. diam.	Min. diam.	Length	Width	Weight
Total	65			85	82	131
Mouth		75	72			
Neck						
Spout						
Arc						
Bridge						
Handle						
Body	52					
Base		46	45			



Type of ware: Redware.

Surface finish: Inner part of the walls, under the lip of the rim shows traces of rubbing with something hard, in the form of shallow parallel horizontal grooves. Thinning admixture is rare, uneven, to 1 mm.

Surface appearance: Matte, smooth.

Surface color: 5 YR 4/2 dark gray red, 7.5 YR 3.5/2 dark brown.

Technique: Hand modeled. Modeled and painted decoration.

Description: Jar. Miniature twin-conical bucket. The greatest protuberance of the body occurs 2/3 of the way up. Under the lip of the rim the walls become more vertical. The bottom is slightly convex, the lip of the rim slightly rounded. On the lip of the rim there is a small ornithomorphic figurine (or perhaps a frog?), which in profile has the shape of an expanded letter S, with round (pressed out) eyes and tail shown in relief. On the outer walls of the vessel can be seen traces of scarcely visible white painting. The belt above the greatest protuberance of the body in the direction of the rim is covered with ornamentation in light-colored paint (originally white?), rather abraded, dirty, illegible. Above this, there are diagonal lines forming triangles (zigzag), inside which are irregular semicircles.

Good quality workmanship. Inside the vessel there are traces of ochre, which may indicate that it functioned as a miniature vessel for paint.

Average workmanship.

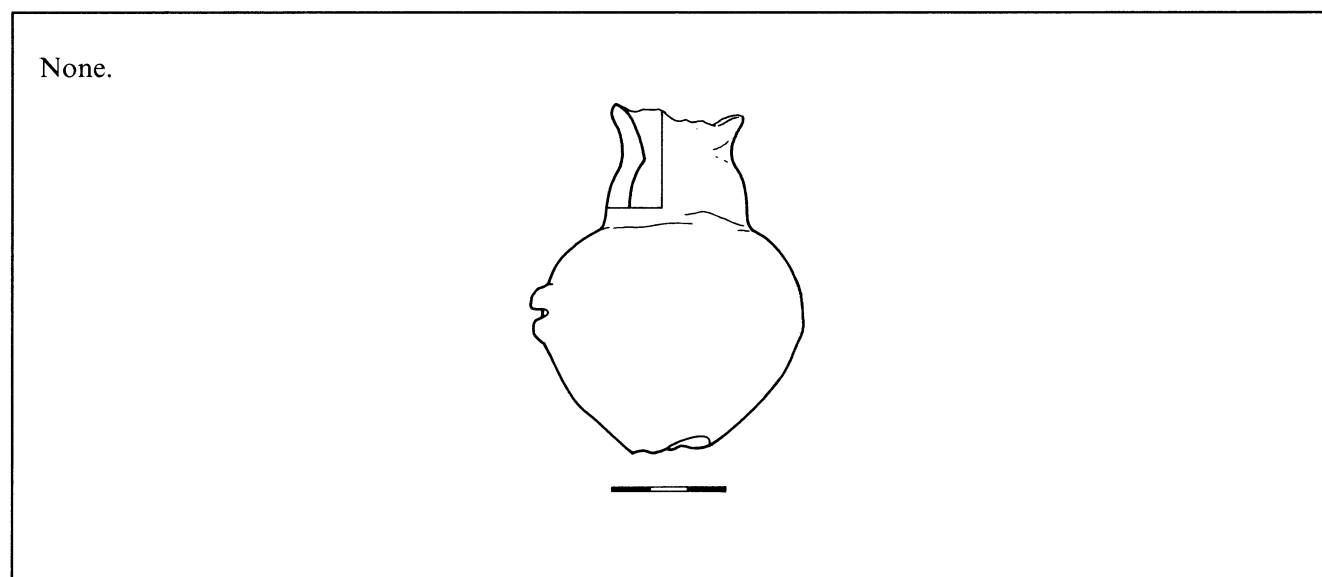
Condition: Good. Rim slightly chipped.

Acquired by: Kluger Collection.

Pl. no. 65

Mus. no.: None.
Culture: Ichma (?)/Teatino (?)/Huarpa (?).
Style: Early Ichma (?).
Type of vessel: Jar.
Provenience: Unknown. Huarpa/Ayacucho/Conchopata (very doubtful provenience).

Dimensions	Height	Max. diam.	Min. diam.	Length	Width	Weight
Total	92			74	70	125
Mouth		36				
Neck	34	40	39			
Spout						
Arc						
Bridge						
Handle						
Body						
Base						



Type of ware: Redware.

Surface finish: Traces of vertical sanding under the neck.

Surface appearance: Matte, smooth.

Surface color: 5 YR 6/3 light brown red.

Technique: Hand modeled.

Description: Jar. Round-bottomed thick-walled jar, oval body, slight narrowing towards the bottom of the vessel, and a rather high, two-member neck with S-shaped profile. Rim flaring to the outside. At the greatest protuberance there are two pairs of modeled knobs, placed one above the other, and separated by a clear horizontal engraved line. These groups of knobs are arranged asymmetrically on the body (at 12 and 3 o'clock). Originally the vessel probably had a flat bottom (it is presently knocked out — opening). Average workmanship.

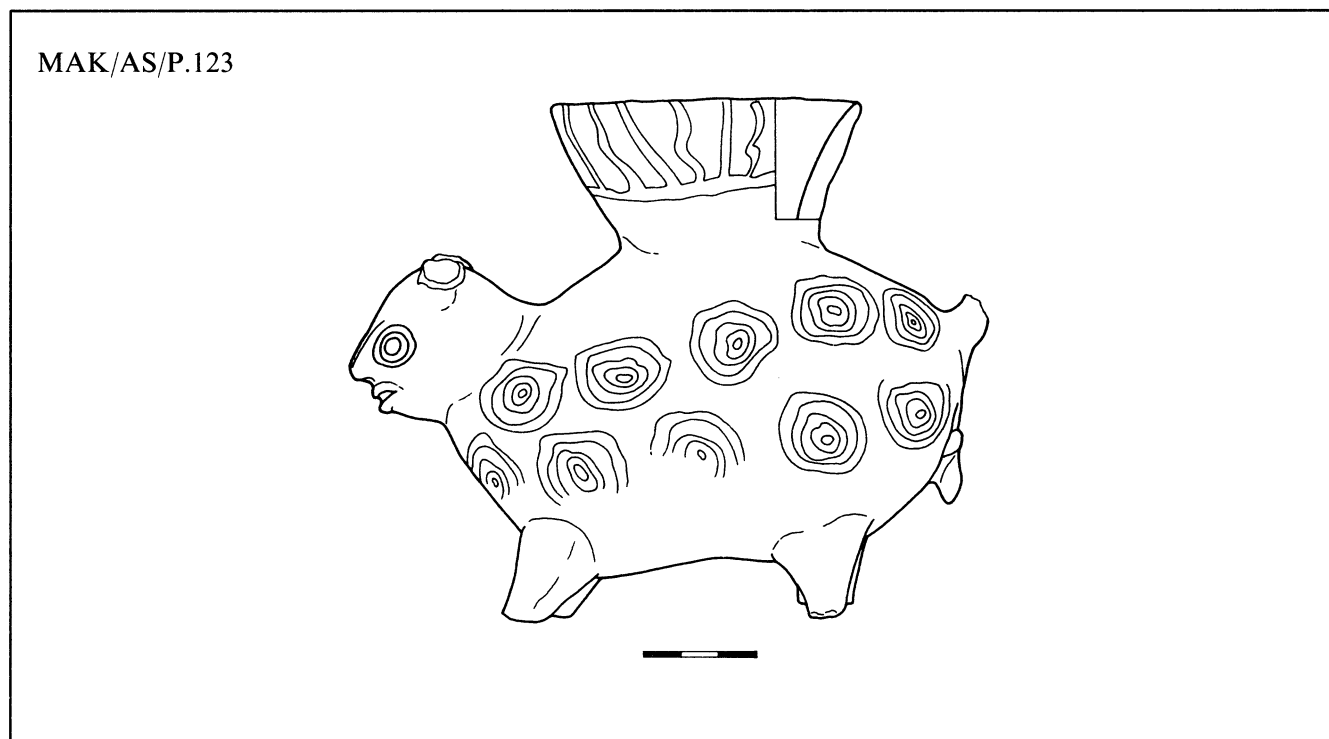
Condition: Good, rim crushed, bottom knocked out.

Acquired by: Kluger Collection.

Pl. no. 66

Mus. no.: MAK/AS/P.123
Culture: One of the Central Coast cultures. Huaura (?)/Lima (?).
Style: ?
Type of vessel: Jar.
Provenience: Unknown. Ancón (doubtful provenience).

Dimensions	Height	Max. diam.	Min. diam.	Length	Width	Weight
Total	137			168	51	"398"
Mouth		"84"	"83"			
Neck	"40"	53	48			
Spout						
Arc						
Bridge						
Handle						
Body						
Base						



Type of ware: Redware — irregular.

Surface finish: Traces of rubbing on the whole surface of the figurine.

Surface appearance: Traces of gloss in places.

Surface color: 2.5 YR 4/4 brown red, 5 YR 3/2 dark brown red, 10 YR 3/2 very dark brown gray.

Technique: Glued together (probably) from two halves; seam visible from inside, traces of the seam also on the outside. The head is hollow (may have been made in a separate mold), the legs and tail attached. Traces of modeling of the mouth, eyes, nose, gonads, and penis. Painted.

Description: Jar. Zoomorphic vessel, oval body, on four legs, topped with a tall neck, flaring wide towards the top. The neck of the vessel has been reconstructed on the basis of one small fragment. The lip of the rim is flat. Its upper part is decorated with dark paint. On a wide belt separated at the bottom by a thin line, there is a motif of alternating straight and wavy lines. The body has been modeled into the shape of the trunk of an animal. It is strongly bilateral, flattened on the sides, with four short, fat, conical legs at the bottom. It is decorated with dark paint: multiplied motif of two concentric circles with a point in the center. On one of the edges of the body there is a round anthropomorphic animal head, slightly flattened on top. It has large engraved eyes, almond-shaped, with lids indicated; a long straight nose, expanding towards the bottom, forming a single line with the forehead; ears; and a wide mouth, delicately smiling (lips separated from each other by a shallow groove). The ears are not preserved. On the other end of the body, more or less at the height of the head, an upturned tail has been attached (the tip is not preserved), and under this are the animal's genitals. Most likely this is a representation of a feline (jaguar).

Average workmanship.

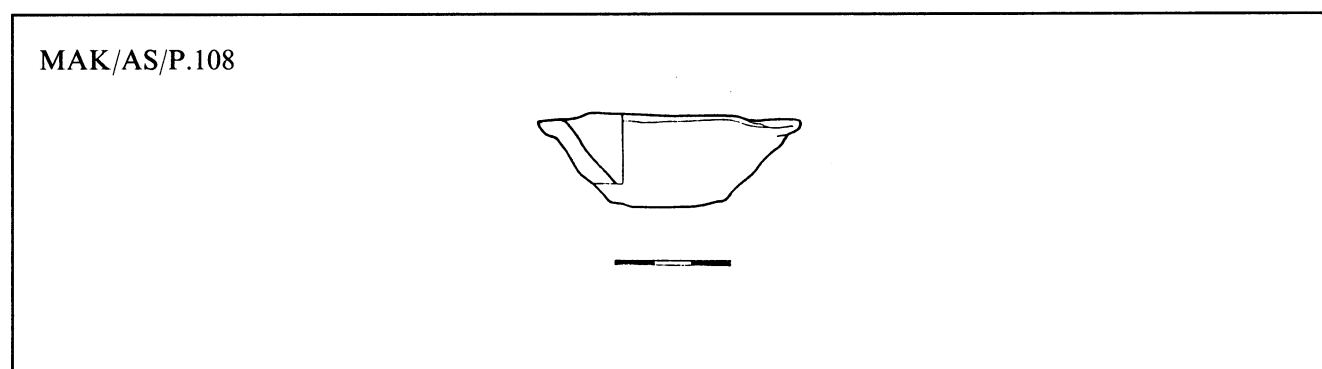
Condition: Poor. Numerous missing parts (ears, tail) and reconstructions: the entire neck reconstructed in plaster on the basis of one fragment, and the painted left front and hind legs are reconstructed in plaster and painted.

Acquired by: Kluger Collection.

Pl. no. 67

Mus. no.: MAK/AS/P.108
Culture: Huari or the Huari influenced culture of the Central Coast (?).
Style: ?
Type of vessel: Bowl (with small handles).
Provenience: Unknown.

Dimensions	Height	Max. diam.	Min. diam.	Length	Width	Weight
Total	24			68	64	41
Mouth						
Neck						
Spout						
Arc						
Bridge						
Handle						
Body						
Base		28				



Type of ware: Redware.

Surface finish: Horizontal and diagonal sandings on the walls.

Surface appearance: Gloss, smooth.

Surface color: 5YR 6/3 light brown red, 10 YR 7/3 very pale brown, 2.5 YR 3.5/2 dark brown red.

Technique: Hand modeled. Openings most likely drilled with some sort of sharp instrument. Painted.

Description: Miniature bowl with flat bottom, barely distinguished, and strongly flaring walls. The lip of the rim is slightly wavy. Two small extensions on the lip of the rim have tiny vertical openings drilled through the center. The entire inner surface of the vessel is painted in geometrical patterns, made with paint of at least two colors. The outer surface is unpainted. The slightly rounded lip of the rim is painted with a dark paint. Under the rim, inside, there is a row of dark triangles, pointed down towards the bottom. Through the middle (on the handle line) there is a thick dark zigzag. On both sides of this, in irregular distribution, there are thin lines, zigzags, and dots.

Rather choppy, negligent workmanship.

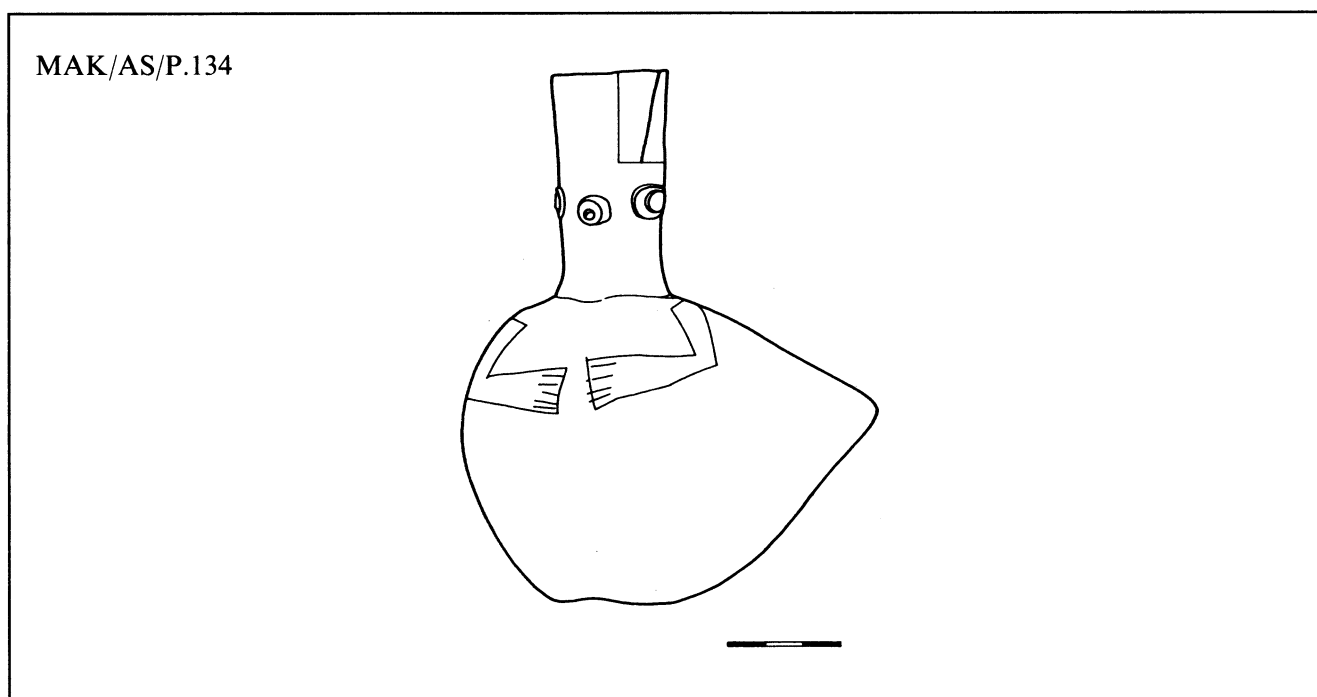
Condition: Very good. Ornamentation partially rubbed off.

Acquired by: Kluger Collection.

Pl. no. 68

Mus. no.: MAK/AS/P.134
 Culture: Ichma (?).
 Style: Late Ichma (?).
 Type of vessel: Handled jar.
 Provenience: Unknown.

Dimensions	Height	Max. diam.	Min. diam.	Length	Width	Weight
Total	146			113	97	290
Mouth		32	32			
Neck	59		30			
Spout						
Arc						
Bridge						
Handle				57	16	
Body						
Base						



Type of ware: Blackware — very irregular.

Surface finish: Traces of horizontal rubbing on the body, and vertical on the neck; traces where the handle and neck were attached, and the eyes and nose attached.

Surface appearance: Matte, smooth.

Surface color: 5 Y 3/1 very dark gray, 7.5 YR 3.5/2 dark brown, 10 YR 4/2 dark brown gray.

Technique: Hand modeled. Modeled ornamentation (elements attached and engraved).

Description: Handled jar. Essentially flat-bottomed vessel, sharp conical tip on one side, with high, straight neck and vertical tape-like handle joining the neck (2/5 of the way up) to the lower part of the body. The lip of

the rim is slightly rounded. The relief ornamentation is anthropomorphic (?). More or less halfway up the neck, two round button eyes have been attached, with concentrically arranged round convex pupils. The nose attached between them is cylindrical in shape, with a small round depression in the center. On the upper part of the vessel body a thin sharp instrument has been used to engrave straight narrow lines and grooves broken at an angle, depicting the figure's arms, flexed at the elbows, with (fan-shaped) hands turned palms inward. The right hand has six fingers, the left five (the gap between the fingers is designated by engraved lines). Good quality workmanship.

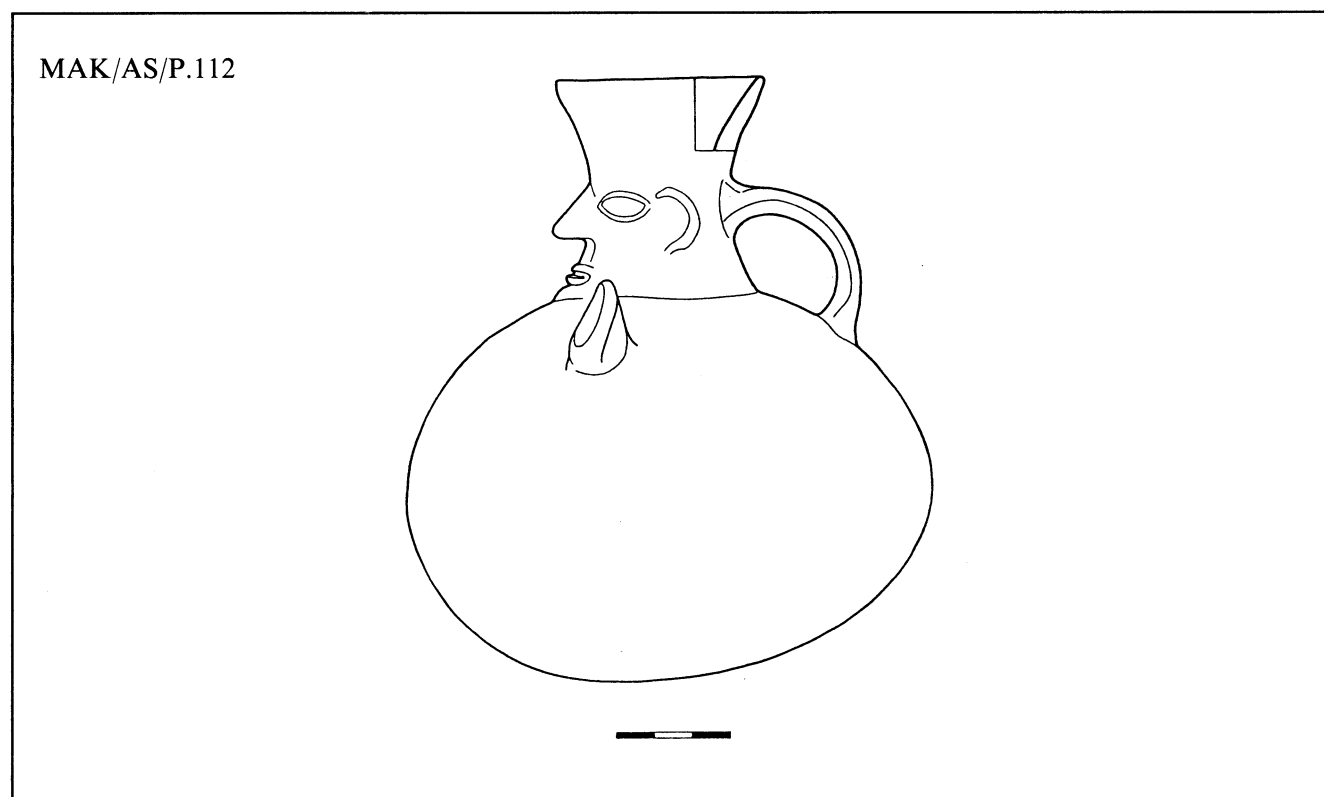
Condition: Good. Neck of the vessel and left eye of the figure filled with plaster and painted. Numerous uneven spots and pits on the surface, especially on the blunt-ended part of the body.

Acquired by: Kluger Collection.

Pl. no. 69

Mus. no.: MAK/AS/P.112
Culture: Ichma (Late Intermediate Period) or one of the Middle Horizon cultures (?).
Style: ?
Type of vessel: Handled jar.
Provenience: Unknown.

Dimensions	Height	Max. diam.	Min. diam.	Length	Width	Weight
Total	160			140	140	"445"
Mouth		54	54			
Neck	56					
Spout						
Arc						
Bridge						
Handle				57	18	
Body						
Base						



Type of ware: Redware — quite irregular.

Surface finish: Traces of rubbing in different directions on the whole surface of the vessel.

Surface appearance: Matte, smooth.

Surface color: 10 R 4/3 weak red, 7.5 YR 5/2 brown.

Technique: Press molded, front to back, and hand modeled. Eyes, mouth and fingers of the right hand — incised with a sharp tool; nose, hands and ears — attached.

Description: Handled jar with a round body and a slightly flattened bottom. The lip of the rim is slightly rounded. The neck of the vessel is relatively tall, narrowed halfway up, and ornamented with a relief in the shape of a human face. Two semicircular ears are attached to the face symmetrically on either side, as is a triangular nose, with the ridge strongly indicated. The almond-shaped eyes and mouth (upper and lower lips divided by a deep groove) are incised. On the side opposite from the face, halfway up the neck, a rather broad tape-like handle is attached, joining the neck with the upper half of the body. The symbolically represented modeled arms of the figure are attached on both sides of the neck, on the upper half of the body. The right arm is raised and is touching the head above the right ear, near the eye. It has four fingers separated from each other by incised grooves. The left hand is indicated only as a short limb, modeled and attached, slightly flattened on the front.

Average workmanship.

Condition: The entire body of the vessel is very badly damaged. Glued together from numerous fragments, plastered, painted. The right arm of the human figure is also broken and glued together from fragments. Numerous abrasions and dents on the surface.

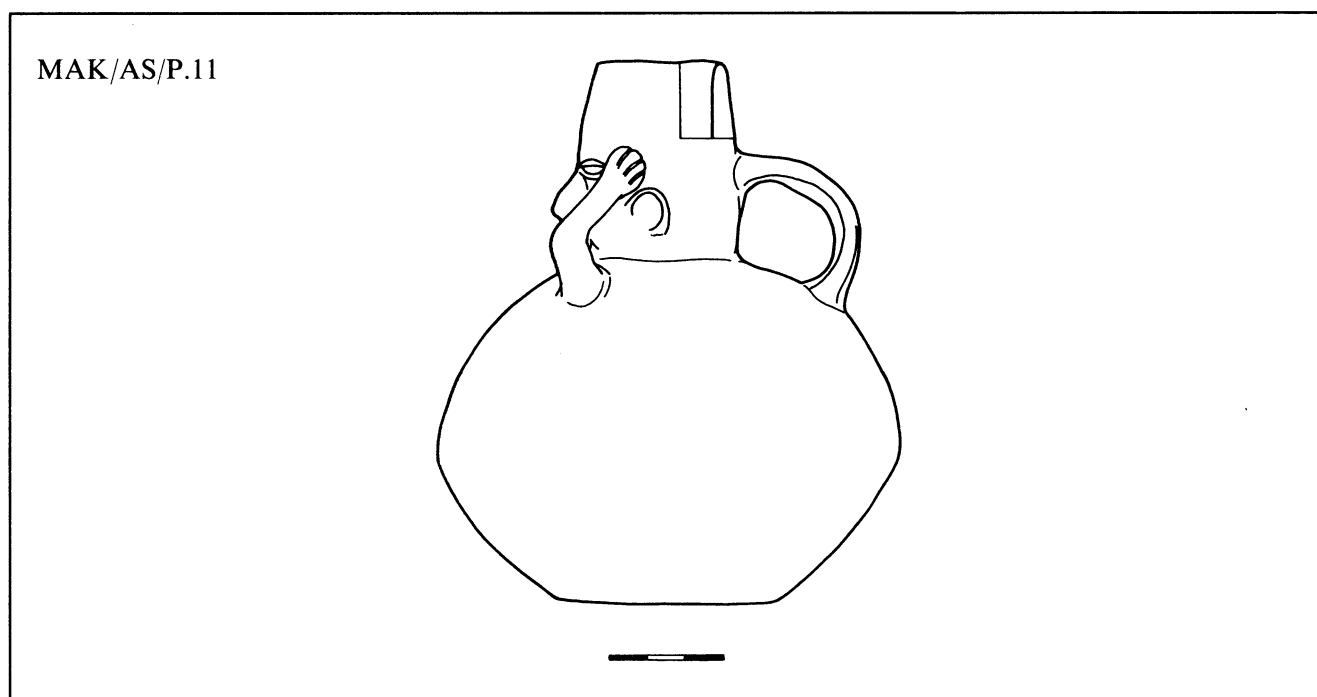
Acquired by: Kluger Collection.

References: Kaulicke 1983: Abb. 63-12 (?).

Pl. no. 70

Mus. no.: MAK/AS/P.11
Culture: Huari or Huari influenced culture (?). Middle Horizon 3-4/One of the Late Horizon cultures of the Coast.
Style: ?
Type of vessel: Handled jar.
Provenience: Unknown.

Dimensions	Height	Max. diam.	Min. diam.	Length	Width	Weight
Total	144			124	124	397
Mouth		35	30			
Neck	51					
Spout						
Arc						
Bridge						
Handle				49	15	
Body						
Base		60	59			



Type of ware: Redware — very irregular.

Surface finish: Traces of rubbing — horizontal on the surface of the body, traces where the arms, ears, and handle have been attached.

Surface appearance: Matte, smooth.

Surface color: 2.5 YR 3/2 dark brown red, 10 YR 2/2 very dark brown gray, 5 YR 4.5/3 brown red.

Technique: Hand modeled. Hands, eyes, mouth, and ears attached. Less significant details carved with a thin sharp instrument.

Description: Handled jar. Round-bodied vessel, with a clearly distinguished virtually flat round bottom, high cylindrical neck slightly expanded in the center, and one tape-like handle. The lower part of the neck has been formed in the shape of a human head. The molded features include lensate, convex eyes and lids, attached and modeled with a sharp instrument; a protruding triangular nose; a mouth in the form of a shallow groove, and large semicircular ears on either side of the head. The neck and the body are joined by a tape-like handle which runs from more or less halfway up the neck (from the back of the head) to the upper part of the body. In addition, arms have been attached, flexed at the elbows, modeled in relief from thin rolls of clay, with five-fingered hands (the intervals between the fingers have been marked as slits carved with a sharp instrument), which are „supporting” or „holding” the head at the height of the temples (on the sides, slightly above the eyes).

High quality workmanship.

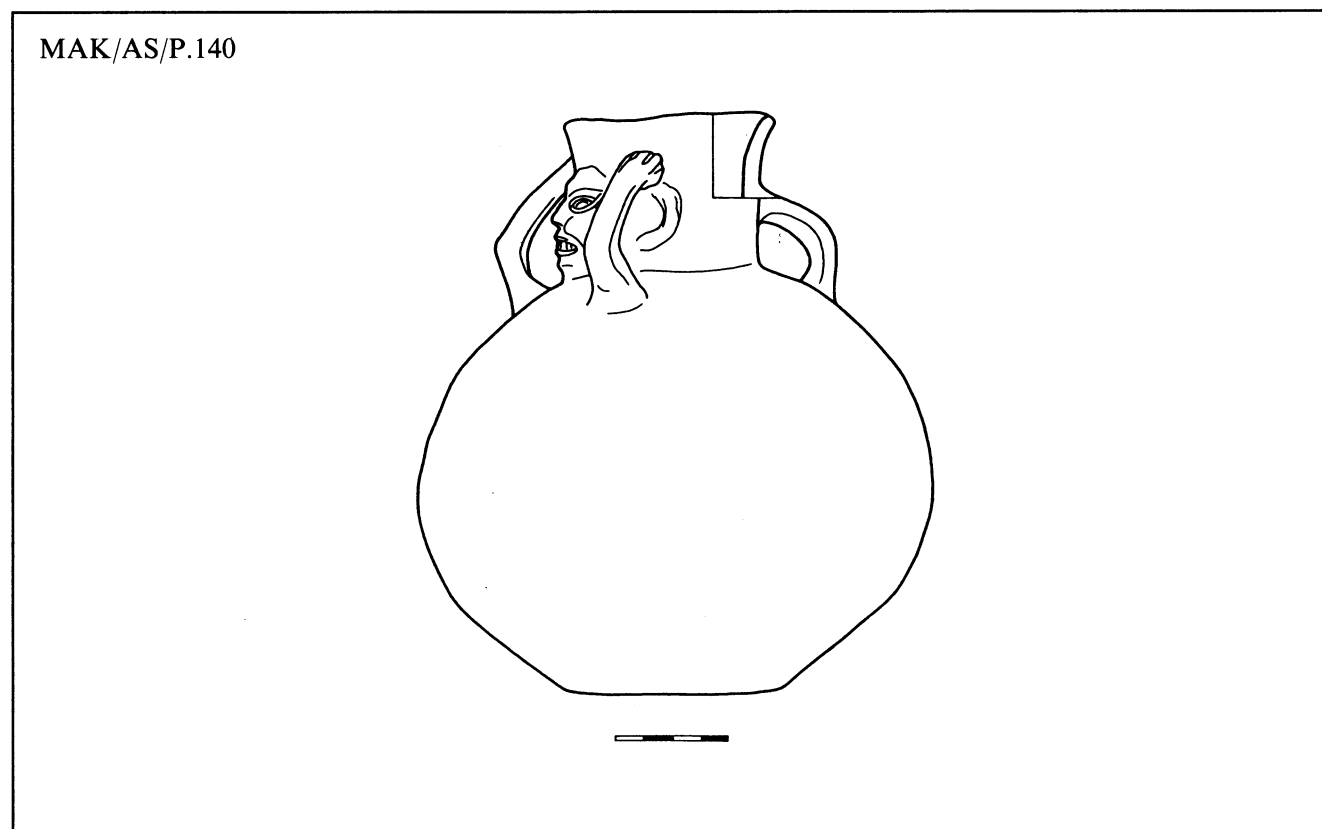
Condition: Very good. No damage. Intact.

Acquired by: Kluger Collection.

Pl. no. 71

Mus. no.: MAK/AS/P.140
Culture: Huari or Huari influenced culture (?). Middle Horizon 3-4 (?)/One of the Late Horizon cultures of the Coast. Ichma (?). Possible Chimú influence (?)
Style: ?
Type of vessel: Handled jar.
Provenience: Probably Ancón (original 19th century label).

Dimensions	Height	Max. diam.	Min. diam.	Length	Width	Weight
Total	205			192	194	"1000"
Mouth		76	74			
Neck	60	66				
Spout						
Arc						
Bridge						
Handle				61	18	
Body						
Base				78	74	



Type of ware: Blackware — slightly irregular.

Surface finish: Traces of smoothing, horizontal scratches on the surface. Traces of where the rim, handle, and hands have been attached.

Surface appearance: Matte, smooth.

Surface color: 7.5 YR 3.5/2dark brown.

Technique: Press molded (face at least) and hand modeled.

Description: Handled jar. Round vessel with a flat, weakly distinguished, slightly irregular bottom, slightly funnel-like neck, and a tape-like handle. The vessel has modeled decoration. The lower part of the neck is formed in the shape of a human head. The protruding surface of the entire face is indicated in relief: cheeks and chin; convex lensate eyes and lids; triangular nose; smiling mouth (lips), showing a row of six teeth; wrinkles around the eyes on both sides of the face, shown as angles pointed towards the eyes; wrinkles around the mouth, shown as small depressions at the corners of the mouth; and large semi-circular ears on either side of the head (attached rolls). The neck and the body are joined by a tape-like handle running from more or less the height of the neck, from the back of the head to the upper part of the body. In addition, arms have been attached to the body; they are flexed at the elbows, modeled from thin rolls of clay, with five-fingered hands (fingers clearly distinguished by rather deep engraved grooves), „supporting” or „holding” the head at the height of the temples (on the sides, just above the eyes).

High quality workmanship.

Condition: Badly damaged. Glued and plastered (different color), fragment of rim and right hand filled out with plaster (only the left hand is preserved, the right is reconstructed).

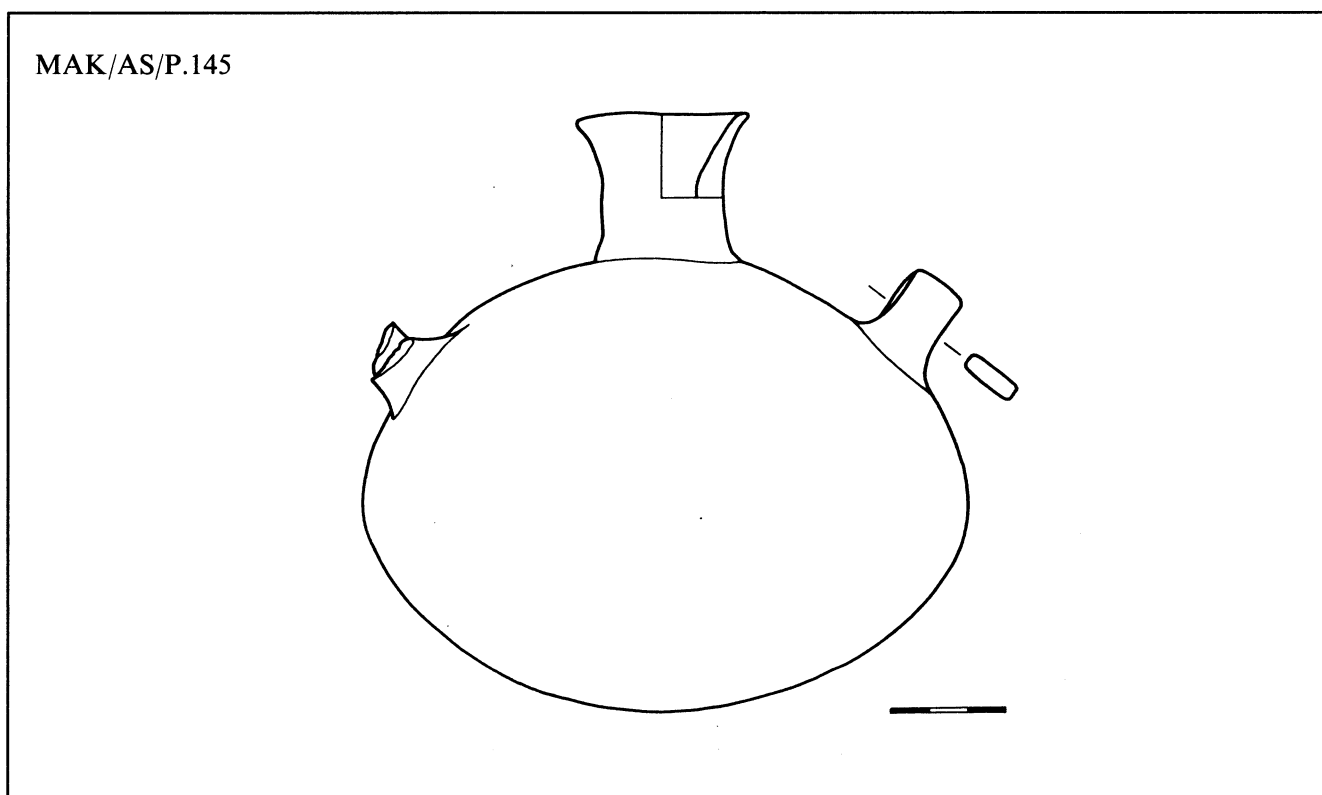
Acquired by: Kluger Collection.

References: Kaulicke 1983: Abb. 63-8; Schjellerup 1986: Pl. no. 32, p. 40, O.D.I. c. 151 (?).

Pl. no. 72

Mus. no.: MAK/AS/P.145
 Culture: Chincha (?)/Chimú (?).
 Style: Chincha — Inka (?)/Chimú — Inka (?).
 Type of vessel: Handled jar.
 Provenience: Probably Ancón (original 19th century label).

Dimensions	Height	Max. diam.	Min. diam.	Length	Width	Weight
Total	160			163	157	485
Mouth		46	46			
Neck	40		32			
Spout						
Arc						
Bridge						
Handle				44;48	15;15	
Body						
Base						



Type of ware: Blackware — very irregular.

Surface finish: Numerous traces of horizontal and vertical rubbing to add gloss. The places where the neck and the handles are attached is well masked.

Surface appearance: Partially glossy, smooth.

Surface color: 5 Y 3/1 very dark gray, 7.5 YR 3.5/2 dark brown, 5 YR 4.5/1 gray.

Technique: Press molded and hand modeled.

Description: Round-bottomed vessel; body oval in cross-section, squat, with the greatest protuberance shifted somewhat towards the bottom of the vessel; tall neck, narrowing halfway up, and two vertical tape-like handles, symmetrically arranged in the upper part of the body. Lip of the rim slightly rounded. No decoration.

High quality workmanship.

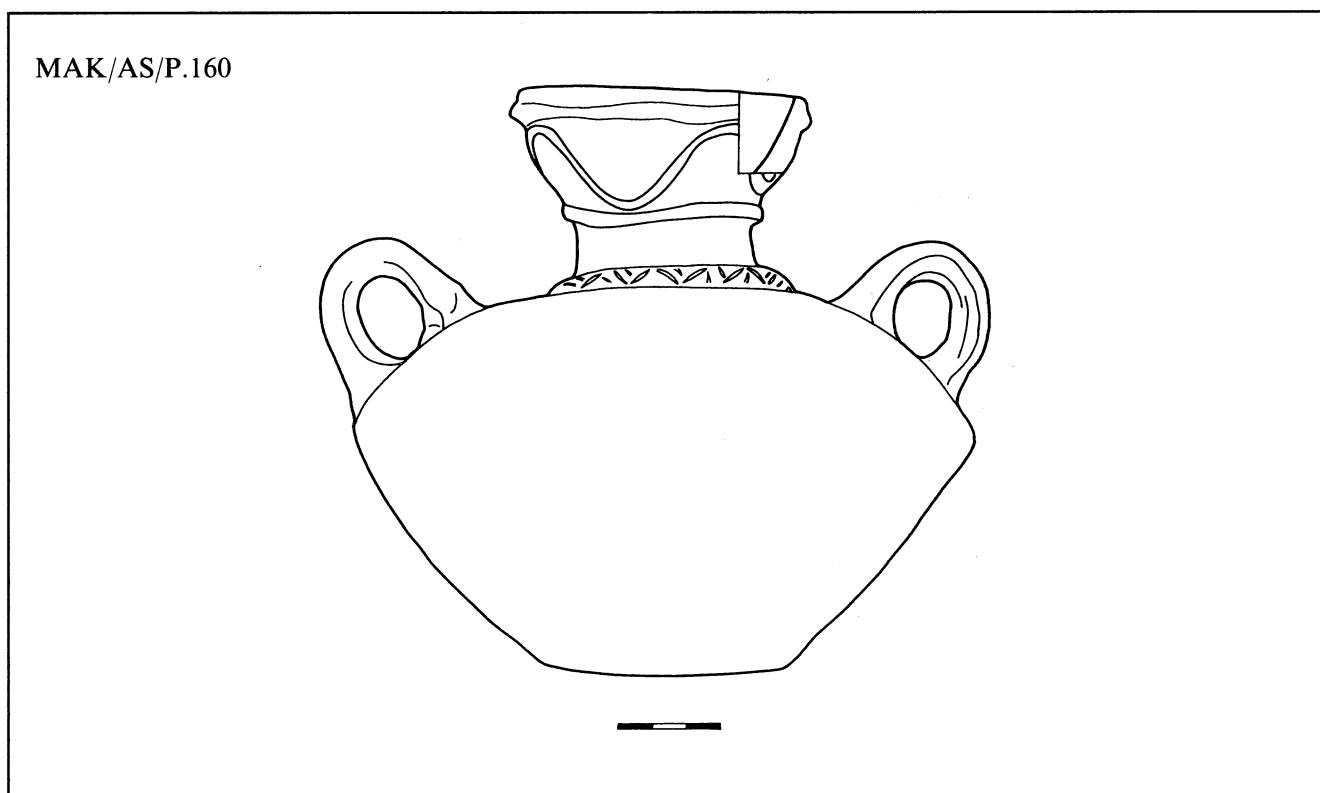
Condition: Good. Vessel cracked, not glued. Only one of the handles is glued.

Acquired by: Kluger Collection.

Pl. no. 73

Mus. no.: MAK/AS/P.160
 Culture: Ichma (?).
 Style: Atypical Ichma (?) with Teatino influence (modeled flange).
 Type of vessel: Handled jar.
 Provenience: Unknown. Ancón (doubtful provenience).

Dimensions	Height	Max. diam.	Min. diam.	Length	Width	Weight
Total	171			193	181	740
Mouth		88				
Neck	55		50			
Spout						
Arc						
Bridge						
Handle				48;50	15;15	
Body						
Base				72	72	



Type of ware: Blackware — irregular, especially the lower part of the body, which is lighter.

Surface finish: Numerous traces of horizontal rubbing on the whole surface of the vessel, as well as traces of polishing, attachment of the handles, gluing of modeled decorations on the neck.

Surface appearance: Generally matte, gloss in places, smooth.

Surface color: 2.5 Y 3/0 dark gray, 5 Y 3/1 very dark gray u IS -black like 5YR 2.5/1 — can be changed.

Technique: Press molded (?) and hand modeled. Small irregularities of shape.

Description: Handled jar. Pitcher with twin conical squat body, greatest protuberance halfway up, twin-handled, with tall neck, strongly flaring and profiled. The two thick handles, of oval cross-section, located above the greatest protuberance of the body, extend slightly beyond the edge of the greatest protuberance of the vessel body. The lip of the rim is flat. The upper part of the neck, of funnel shape, is decorated with molded strips. There are two straight modeled lines, one running at the top not far from the rim, the second at the base of the upper part of the neck. Between them there is a wavy modeled strip surrounding the entire circumference of the neck and almost touching both of the straight lines. The other, lower part of the neck is cylindrical in shape, and its walls run virtually vertically (a slight narrowing takes place more or less halfway up this part of the neck). It merges into the body through a short and rather narrow modeled flange, decorated with a geometrical motif in the shape of an engraved zigzag motif and short engraved diagonal and vertical lines. The bottom is round, slightly convex, easy to distinguish, but merging smoothly into the body.

Good quality workmanship.

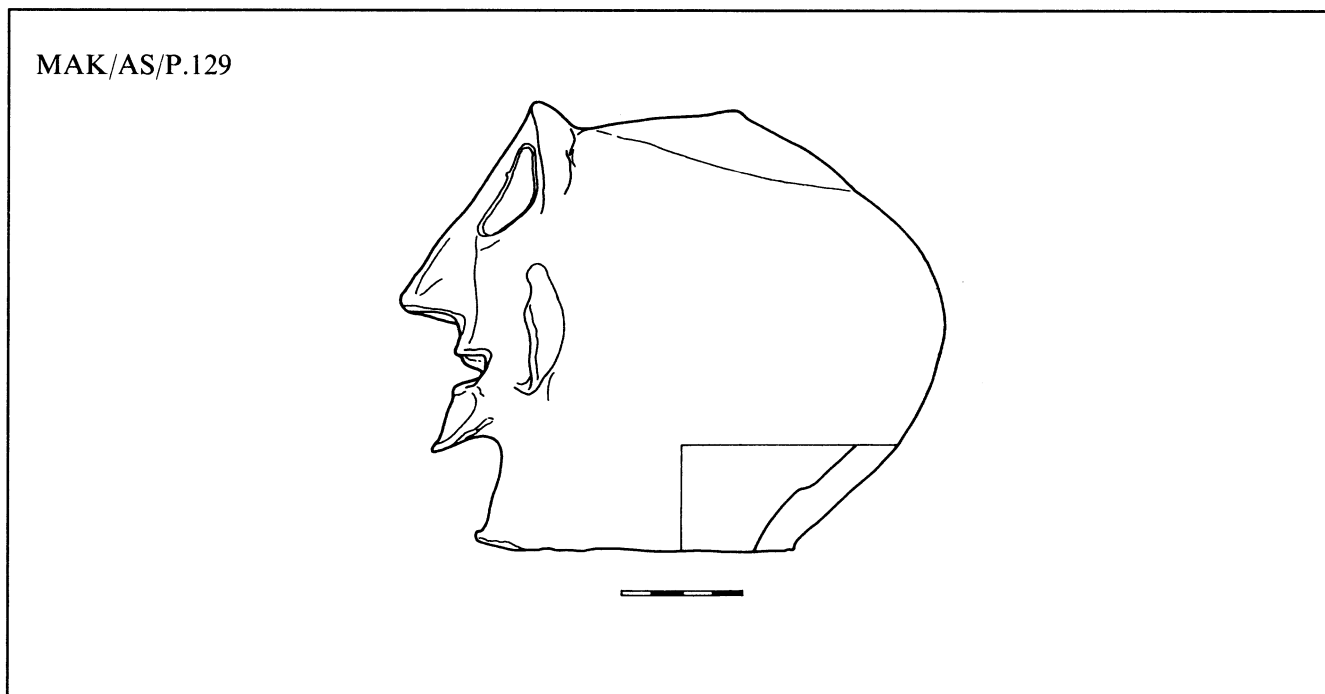
Condition: Good. Rim very slightly damaged. One of the handles is attached and filled with plaster. On the bottom part of the body there is an obvious repair (probably of very old date), in the form of a wooden cork ca. 1 cm thick, pounded into a hole in the vessel and covered with black paint (probably original).

Acquired by: Kluger Collection.

Pl. no. 74

Mus. no.: MAK/AS/P.129
Culture: Peru (?). North Coast (?). Selvatic influence (?).
Style: ?
Type of vessel: Figurine?
Provenience: Unknown.

Dimensions	Height	Max. diam.	Min. diam.	Length	Width	Weight
Total	148			180	166	1076
Mouth						
Neck						
Spout						
Arc						
Bridge						
Handle						
Body						
Base				103	92	



Type of ware: Redware — very irregular.

Surface finish: Traces of rubbing on the whole surface of the figurine.

Surface appearance: Matte, smooth. Thick-grained admixture, large white grains visible on the surface.

Surface color: 5 YR 6/4 light brown red, 7.5 YR 3.5/2 dark brown.

Technique: Hand modeled.

Description: Figurine (?) in the shape of a male head, open at the bottom, of unknown purpose (cover to an urn, independent object, artificial head?). The vaulting of the skull has a conical shape, the occiput is oval shaped; the lower edge on the front is flat, emphasized with a slight thickening. The face, more or less

triangular in shape, rather flat, is modeled separately. The thick eyebrow ridge at the top, running clear across the forehead, has been indicated in relief. Under this there are engraved grooves of almond shape. In these places conical shaped eyes have been attached (only the right eye is preserved, the left has been lost). Through the center of the face, beginning with the ridge, runs the nose, naturalistically shaped, straight, long, slightly expanded at the bottom, with nostrils and nostril openings clearly indicated. The mouth, with lips spread, is shown as a wide and very expansive opening. A mustache, in the form of a modeled strip, is attached above the mouth; it is slightly broken off on both sides, painted with a light coat of black paint(?). Under the lower lip, a short spiked beard has been attached. The ears are in the form of semicircular, protruding slats, bent backwards, with openings indicated in the center.

Good quality workmanship.

Condition: Good. Left eye missing. Numerous cracks in the outer layer of the clay on the surface.

Acquired by: Kluger Collection.